



LSLIDAR PRODUCT GUIDE



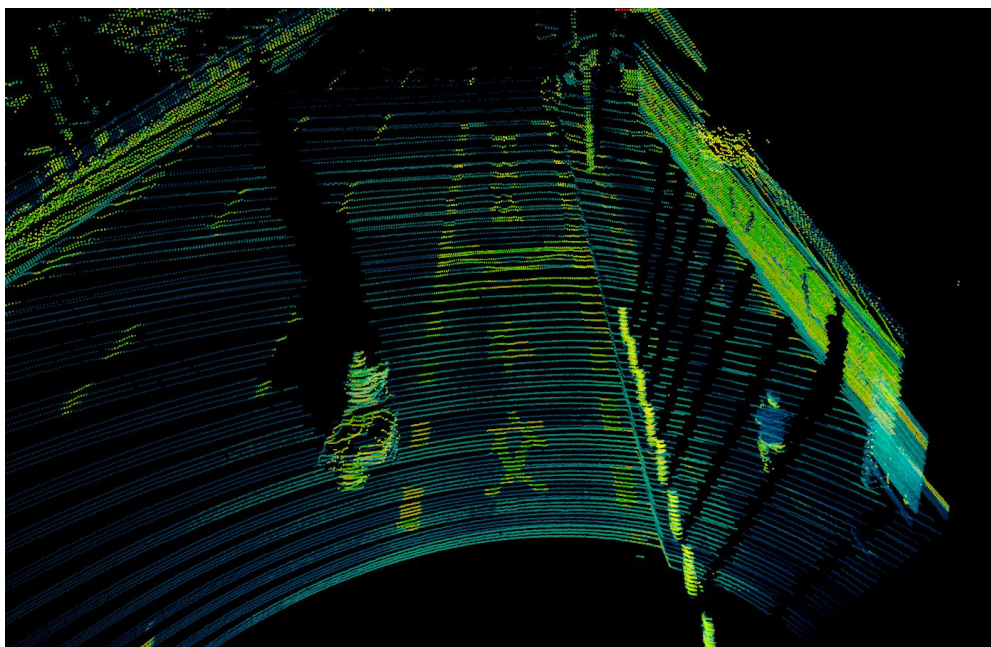
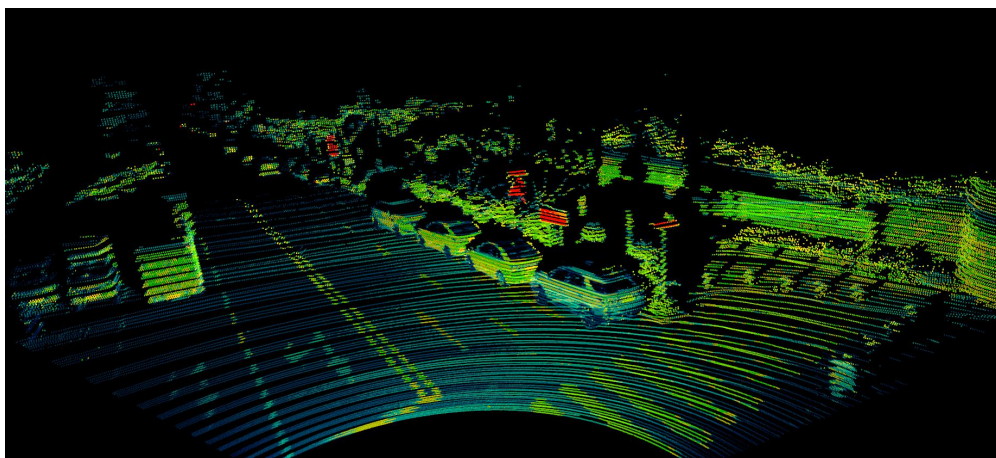
CH128X Hybrid-Solid State LiDAR



Abstract

CH128X is a new generation of Auto-Grade Multi-Lines Hybrid-Solid State LiDAR with cutting-edge technology in miniaturization, more adaptable to different vehicles. The parameters of this LiDAR, not only meets the perception in middle-long range, but also caters for the limited size of automotive. The height is only 75 mm and embedded solution is more suitable to the aesthetic needs of passenger car.

Demo



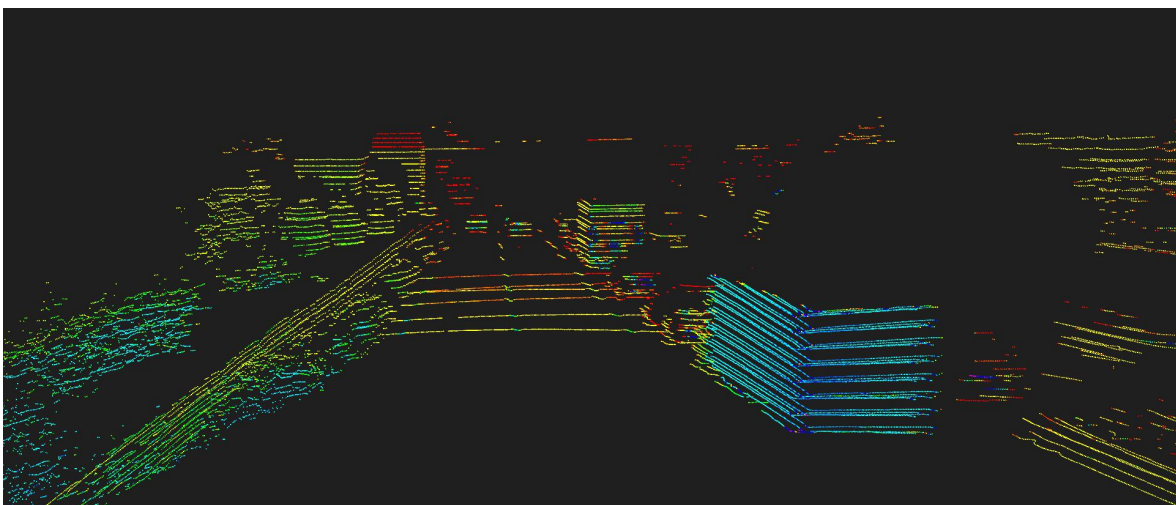
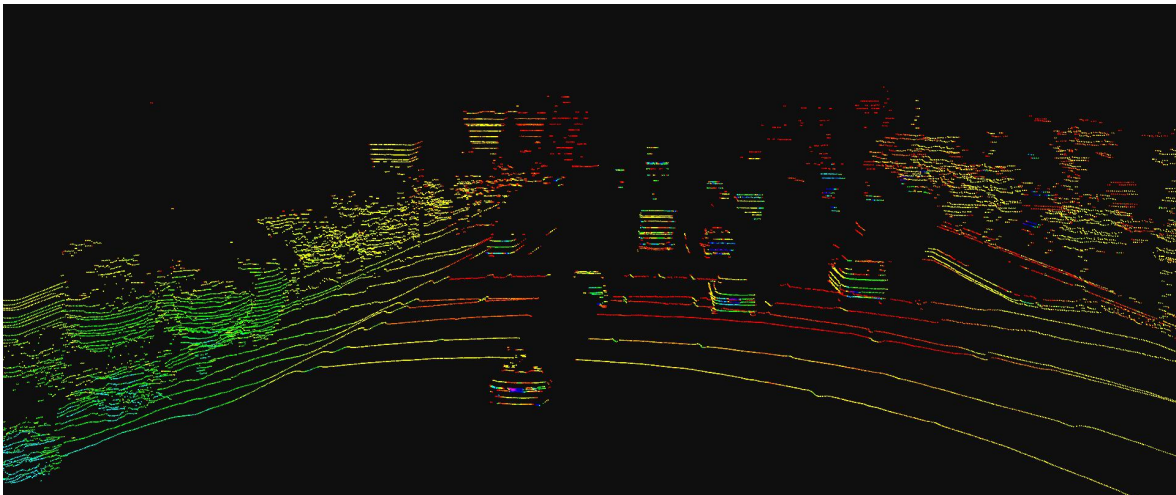
CH 32 Hybrid-Solid State LiDAR



Abstract

CH32 is designed for Automotive Grade Standards to meet demands of L3- L5 autonomous cars, which can work with low-speed cars, V2X and long operation scenarios. CH32 is the 1st LiDAR that officially passed auto-grade test in China.

Demo



C32/16-line Mechanical LiDAR



C32

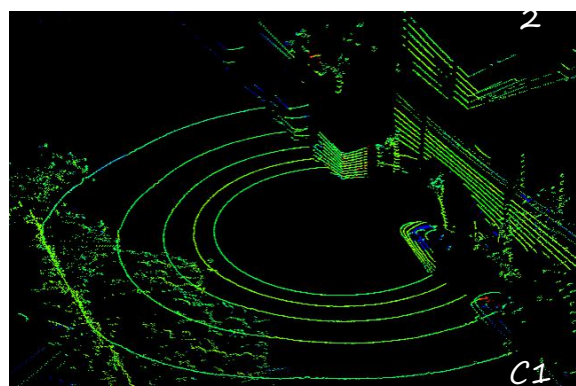
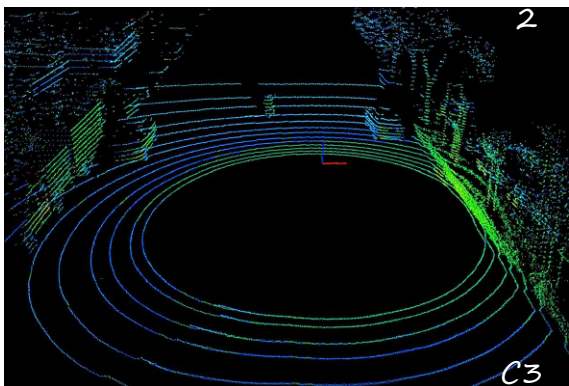
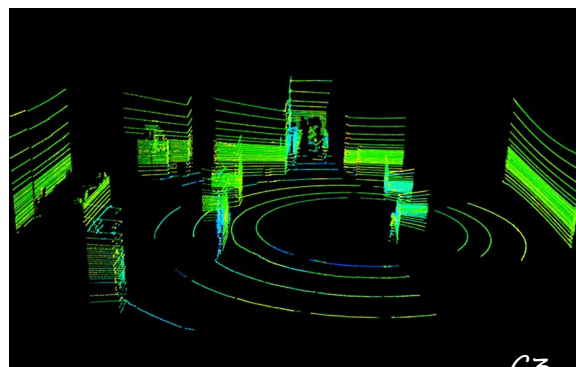
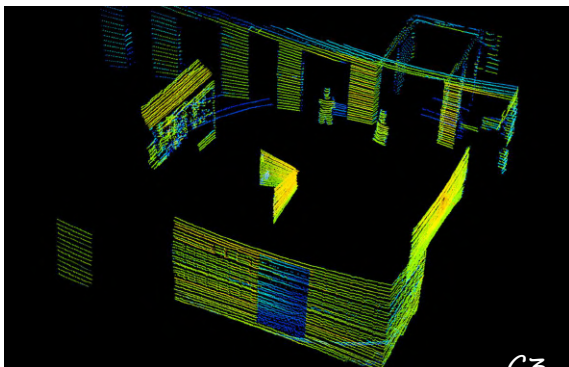


C16

Abstract

C32/16 achieves 360° 3D high-speed scanning with stable and reliable performance. Being benefited from self-developed LD and APD automated packaging process, the laser transmitter and receiver modules of C32/16 are highly integrated, with more stable and reliable performance, more shock and vibration resistance, and more suitable for mass production. Both are widely used in autonomous vehicle, ADAS, smart transportation, robots, logistics, surveying and mapping, security and so on.

Demo



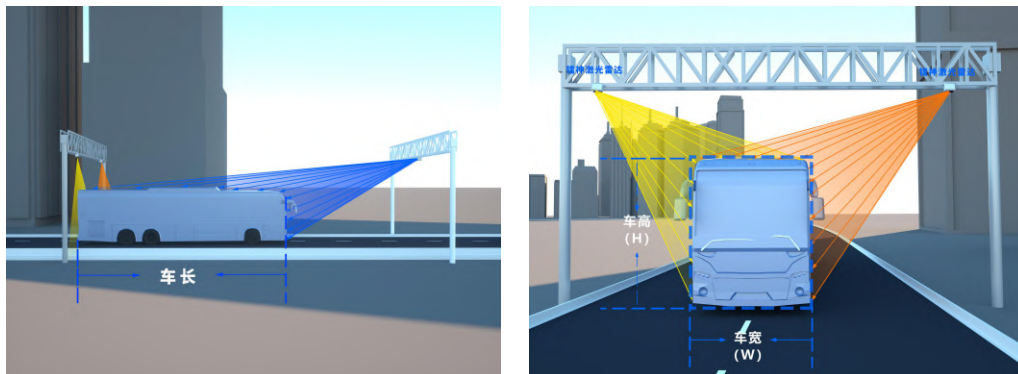
HS Series Fast Scanning LiDAR



Abstract

HS series high-speed scanning LiDAR has excellent detection accuracy. Its measurement range is up to 100 m, and distance accuracy is $\pm 2\text{cm}$. 160Hz high scan frequency can easily sense high-speed movement objects in time, and accurately capture vehicle contour information. Widely used in dimension measurement of vehicle or goods ,high-way ETC activation, high /speed limitation measurement, vehicle counter detection, vehicle types classification, traffic jam statistics, etc.

Demo



LS01B 360° Triangle LiDAR



Abstract

LS01B is a 2D LiDAR, providing a reliable 360° surrounding perception for indoor robots. Adopting triangulation principle, LS01B is a cost-effective sensor with multiple good performance, like max light intensity up to 20,000luxI, compact structure, low power consumption, durable, etc.

Demo

